

PART OF THE N.W. 1/4 OF SECTION 28, T.7N., R.1W., S.L.B. & M.

MARVELLA HEIGHTS NO. 1

IN NORTH OGDEN CITY

TAXING UNIT: 10

SCALE 1" = 40'

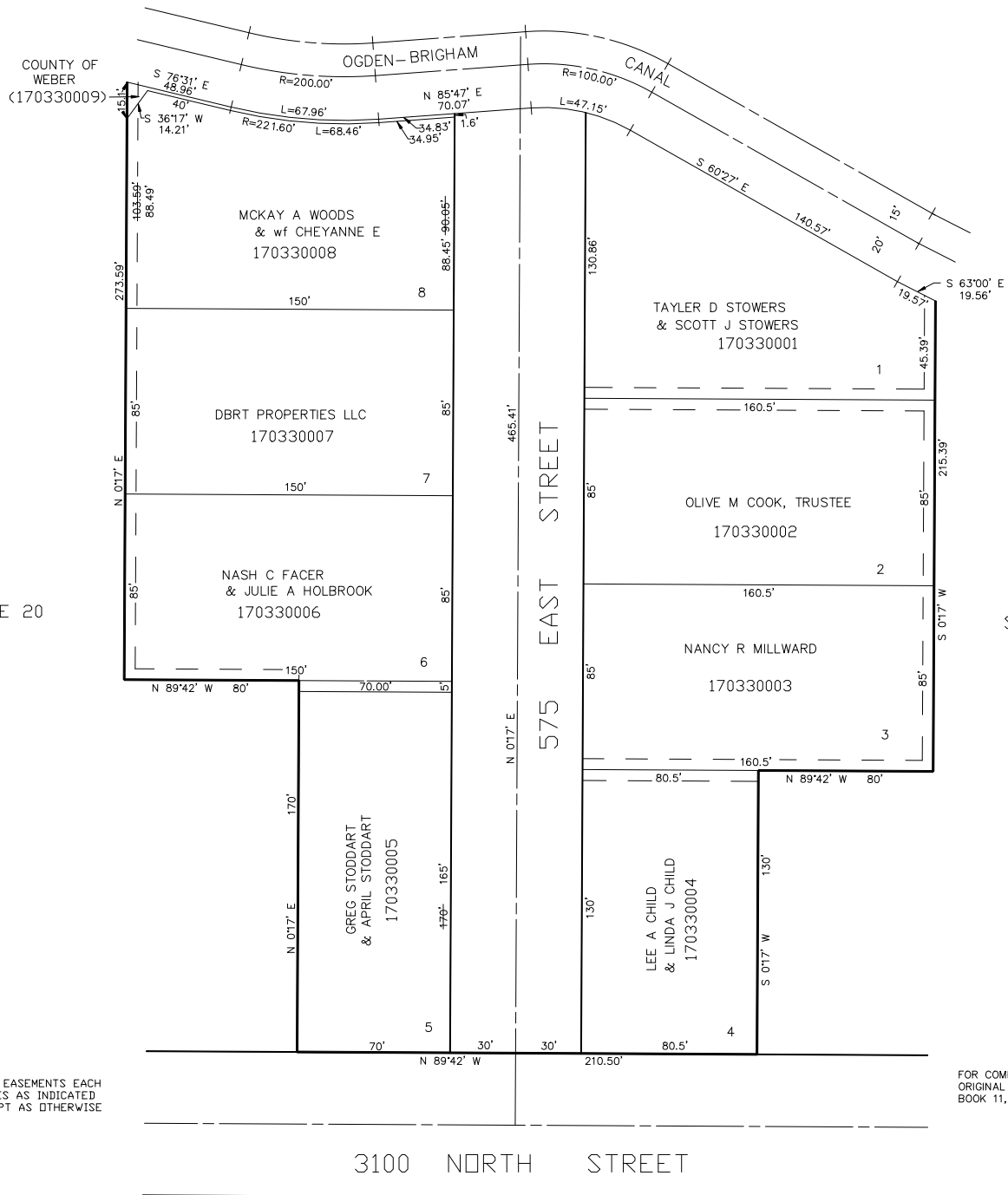
SEE PAGE 34

SEE PAGE 20

SEE PAGE 20

5' UTILITY & DRAINAGE EASEMENTS EACH
SIDE OF PROPERTY LINES AS INDICATED
BY DASHED LINES EXCEPT AS OTHERWISE
SHOWN.

FOR COMPLETE ENG DATA SEE
ORIGINAL DEDICATION PLAT IN
BOOK 11, PAGE 84 OF RECORDS.



3100 NORTH STREET

SEE PAGE 20